

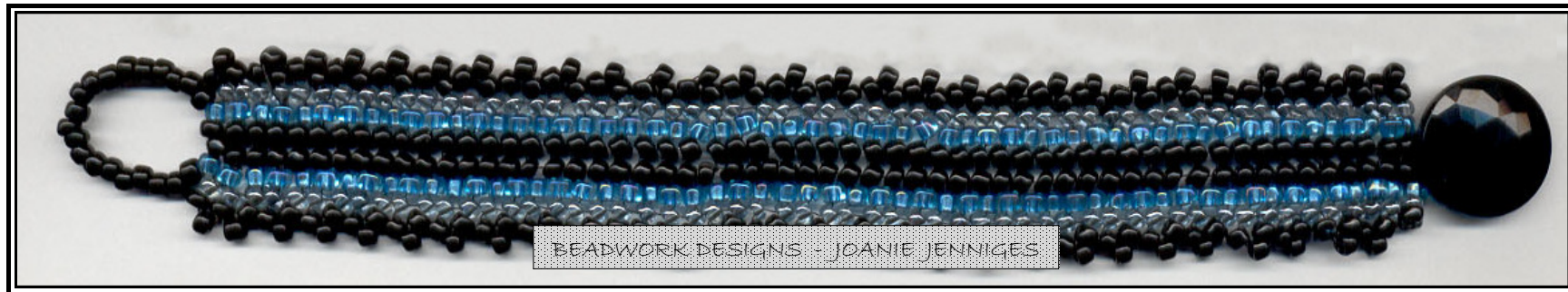
Three Bead Herringbone Bracelet with Picot Edging

Instructions, Graphics and Photographs by Joanie Jenniges, Copyright 1999

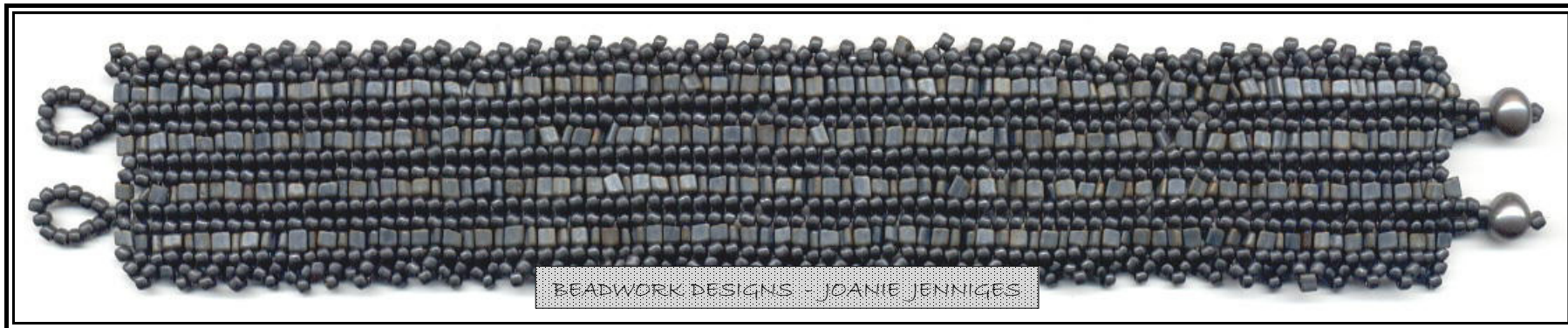
website: www.beadworkdesigns.com

email: joanie@beadworkdesigns.com

Page 1



Size 8 seed bead and triangle bead version - see tutorial



Size 11 seed bead and triangle bead version

1. Follow the tutorial but use Size 11 seed and triangle beads
2. String 1 sb, 1 triangle, 2 sbs, 1 triangle, 2 sbs, 1 triangle, 2 sbs, 1 triangle, 1 sb
3. Repeat Step 2 three times
4. Follow Step 3
5. Follow Step 4 to complete the row

Supplies Needed

1 Tube Size 8 Japanese seed beads



1 Tube Size 8 Japanese triangle (or seed) beads



Size D Nymo (in coordinating color)

1 Shank Button, Toggle Set or a 6-8 mm Bead

Size 12 Beading Needle

Thread conditioner, if desired

PT: pass through in same direction as previous pass(es)

PBT: pass through in the opposite direction as previous pass(es)

FADED BEADS AND THREADS INDICATE PREVIOUS STEPS

You MAY use this design, instructions, graphics & photographs to create items for personal use, gifts or "pin money" only, but DO NOT mass produce items; reproduce, sell or copy, this design or these instructions, graphics & photographs, or use this design or instructions in teaching, with kits or in judged contests without the written permission of Joanie Jenniges. Thanks!

Three Bead Herringbone Bracelet with Picot Edging

Instructions, Graphics and Photographs by Joanie Jenniges, Copyright 1999

website: www.beadworkdesigns.com
email: joanie@beadworkdesigns.com

Step 1: Thread and condition 3yards of Nymo. Using a single strand and leaving Using a single strand and leaving a 12-inch tail,

STRING: 1 stopper bead (S).
PT: The stopper bead

STRING: 1 seed bead, 1 triangle bead, 2 seed beads, 1 triangle bead and 1 seed bead. (Beads 1-6)

KEEP THE FIRST ROW IN PLACE BY PLACING A SECOND NEEDLE OR PIN THROUGH BEADS 1 - 6 (DON'T SPLIT THE THREAD). THREAD). KEEP IN PLACE UNTIL PATTERN IS ESTABLISHED.

Step 2:

STRING: 1 seed bead, 1 triangle bead, 1 seed bead (Beads 7-9)
PBT: Seed beads 4 and 3

Step 3:

STRING: 1 seed bead, 1 triangle bead, 1 seed bead (Beads 10-12)
PBT: Seed bead 1

STRING: 3 seed beads (Beads 13-15) THIS IS THE PICOT
PBT: The last seed bead added in the herringbone row (12)

Step 4:

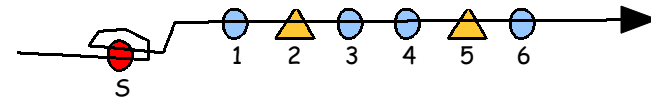
STRING: 1 seed bead, 1 triangle bead, 1 seed bead (Beads 16-18)
PBT: Seed beads 10 and 9

STRING: 1 seed bead, 1 triangle bead, 1 seed bead (Beads 19-21)
PBT: Seed bead 7

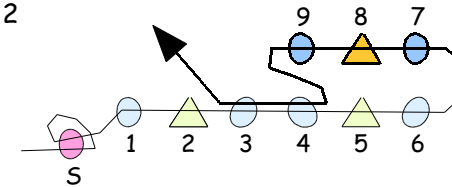
STRING: 3 seed beads (Beads 22-24)
PBT: The last seed bead added in the herringbone row (21)

Repeat Steps 2 through 4 to desired bracelet length keeping in mind the length the clasp will add. Add new thread as needed while continuing to follow the thread path. Tie half-hitch knots and weave in tail.

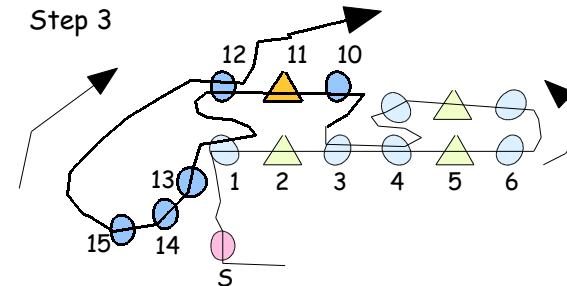
Step 1



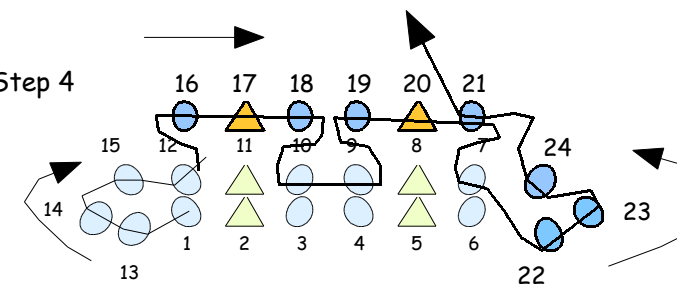
Step 2



Step 3



Step 4



Three Bead Herringbone Bracelet with Picot Edging

Instructions, Graphics and Photographs by Joanie Jenniges, Copyright 1999

website: www.beadworkdesigns.com
email: joanie@beadworkdesigns.com

Page 3

Step 5: Remove the stopper bead; thread and condition the tail

STRING: 4 seed beads, 1 triangle bead, the 8-mm bead, and 1 seed bead

PBT: The 8-mm bead and the triangle bead (A)

STRING: 4 seed beads and pass back through the first row of herringbone

PBT: The first row of herringbone stitch (Beads 6-1)

PT: Entire thread path of this step several times to reinforce.

Weave in thread, tie half-hitch knot, weave, tie knot, weave, clip thread

Step 6:

STRING: 4 seed beads, 1 triangle bead and enough seed beads to

form a loop that will fit snugly over the 8-mm bead

(OR the button)

Keep in mind that the loop will get tighter and smaller with additional thread passes.

PBT: Triangle bead B

STRING: 4 seed beads

PT: The last row of herringbone stitch

PT: Entire thread path of this step several times to reinforce.

Weave in thread, tie half-hitch knot, weave, tie knot, weave, clip thread

ELIMINATE

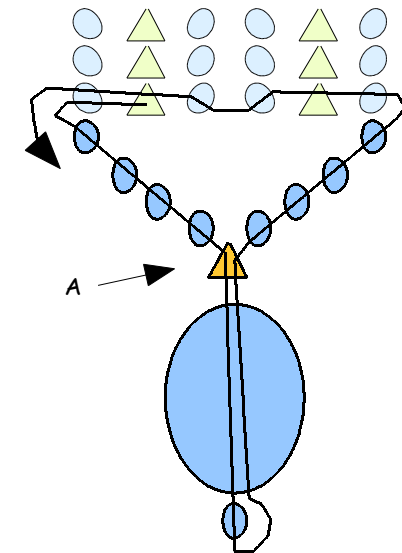
FOR BUTTON: THE TRIANGLE BEAD (A)

FOR TOGGLE: THE TRIANGLE BEADS (A AND B)

(JUMP RINGS MAY BE NEEDED TO ALIGN THE TOGGLE)

PLACE THE BUTTON'S SHANK OR THE TOGGLE'S LOOP IN PLACE OF THE TRIANGLE BEAD

Step 5



Step 6

